



MONTHLY MEMBERSHIP PROGRESS REPORT

District 9 SE

Results as of: 06/30/2019

GMT: OPEN

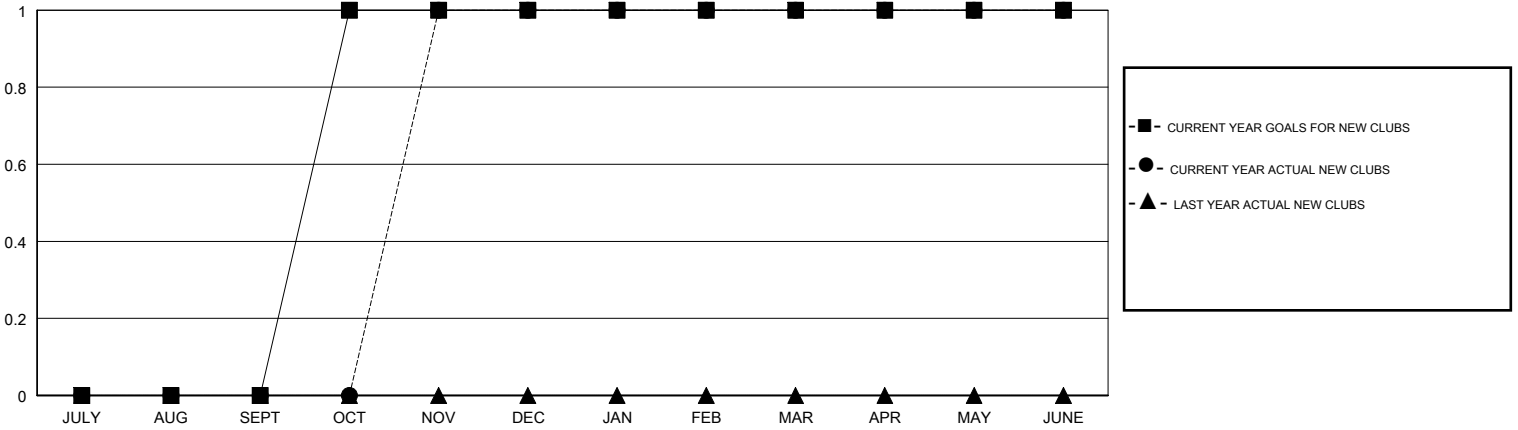
LOCATION IOWA

GMT CA

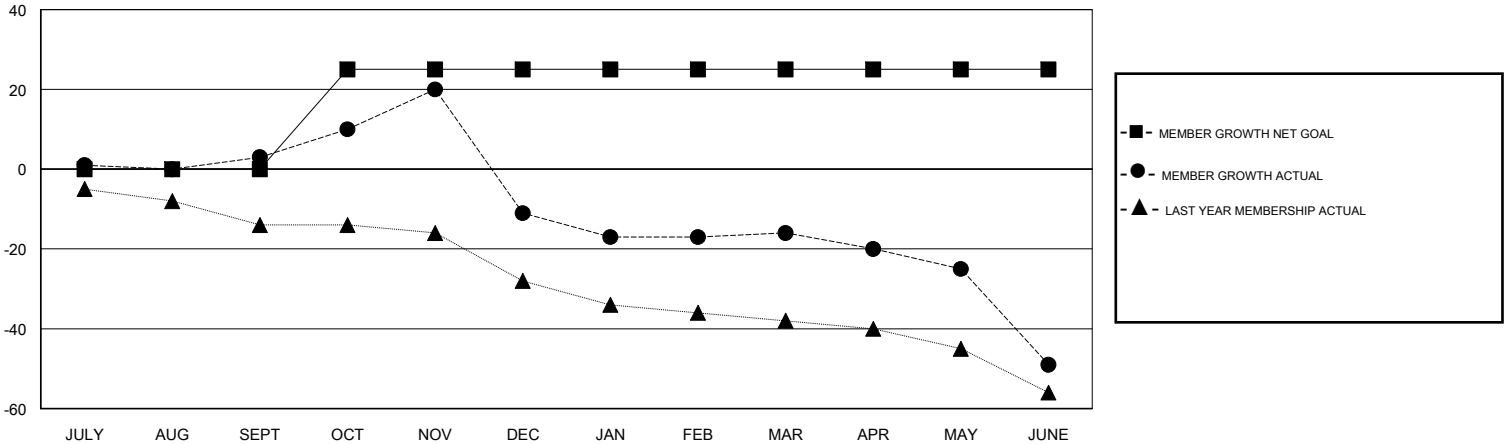
Clubs			
RESULTS FOR 2018-2019			
QUARTER	NEW CLUB GOAL	NEW CLUBS	DROPPED CLUBS
JULY/AUG/SEPT	0	0	0
OCT/NOV/DEC	1	1	1
JAN/FEB/MAR	0	0	0
APR/MAY/JUNE	0	0	0

Members			
RESULTS FOR 2018-2019			
QUARTER	MEMBER GROWTH NET GOAL	MEMBER GROWTH ACTUAL	DROPPED MEMBERS ACTUAL (including transfers)
JULY/AUG/SEPT	0	12	7
OCT/NOV/DEC	25	35	49
JAN/FEB/MAR	0	10	15
APR/MAY/JUNE	0	9	41

GOALS AND ACTUAL NEW CLUBS CUMULATIVE



GOALS AND ACTUAL MEMBERS CUMULATIVE



DROPPED CLUBS: 1	25 CLUBS OF 49 ADDED 1 OR MORE NEW MEMBERS	<u>GENDER DISTRIBUTION</u>	
		MALE	755 (70.23%)
		FEMALE	320 (29.77%)
		Women Percentage Fiscal Year Goal: 32%	
<u>DROPPED MEMBERS</u>		TOTAL FAMILY UNIT MEMBERS	229
DECEASED	15	FAMILY MEMBERS PAYING HALF DUES	115
CLUB CANCELLED	9		
OTHER	88		
TOTAL	112		

[CLICK HERE FOR CUMULATIVE MEMBERSHIP DATA](#)